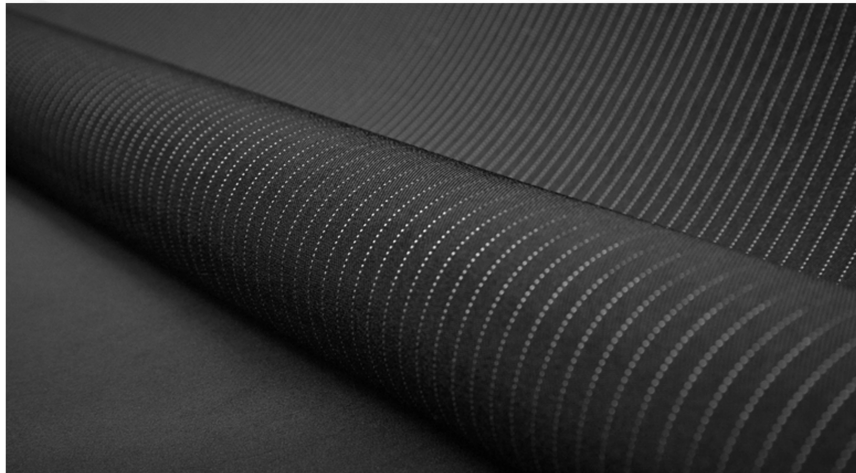




"A **global reaching** internationally recognized  
textile company for **high quality textiles**  
based in **Indonesia**"





## ABOUT US

Established in 1973, **ADETEX** is a group of multi-product textile company located in Bandung, West Java, and Solo, Central Java. As the first company to pioneer polyester georgette production in Indonesia, we have since then continued growing, manufacturing a vast range of textile products, from yarn to garments, cotton to polyester.

Perfecting the quality of our product is our main focus. Respectively, the development of our human resources is therefore regarded as top priority. We implement the 5K program, *Keselamatan, Kedisiplinan, Kebersihan, Ketertiban, and Kesopanan*, as our code of conduct to ensure safety, discipline, cleanliness, orderliness, and manner among all our personnel.



Today, we thrive in the global market to provide high quality products to our customers worldwide. We aim for total customer satisfaction and we are committed to do so through continuous improvements and innovations. Going forward, we will grow stronger and better as a global-reaching, internationally recognized company.





## PRODUCT SUMMARY



### YARN

Producing yarns of excellent quality since 1985, our spinning division currently has the capacity to manufacture 8,800 bales with approximately 140,000 spindles.



### FABRIC

Our woven fabrics has been widely recognized since 1973 and currently produces 2,5 million yards of greige fabrics each month. In 1979, we have pioneered in georgette manufacturing in Indonesia. Now we produce approximately 1 million yards of printed fabrics monthly. In 1995, we started manufacturing dyed fabrics, with the brand of **Ademoda**. Our current dyeing capacity is at 2 million yards per month.



### GARMENT

In 1991, we initiated our first garment division, **PT Saimoda Garmino**, in Bandung. Nowadays manufacturing formal articles for men and women, with a capacity of 80,000 pieces per month. A year later, we set up another facility, **PT Tupai Adyamas Indonesia**, located in Boyolali, to manufacture sportswear with current capacity of 500,000 pieces per month.



### APPAREL

**KORZ**, established in 2006, is our apparel division which offers the finest and latest collection of fashion and accessories, along with online shopping features.



## DETAIL PRODUCT & FACILITY

### YARN



Our current main product is the 100% Rayon Viscose, Ring Spun, with the following range:

Product	Range of Product
1.2 Denier	Ne 30/1, 40/1 and 50/1
0.9 MicroDenier	Ne 50/1, 60/1 and 80/1

In addition, we are currently developing the 50/1 and 60/1 Rayon yarn with high twist to obtain a different effect on the weaved fabric.

Over the years, we continue to establish new factories and upgrade the existing facilities. We constantly expand our reach in the ever-evolving textile industries to accomplish the vertical setup, that is, manufacturing that covers the beginning to the end, yarns to garments. Our dedication to quality is the reason we choose to use machineries from Japan and Europe in all of our factories.



### SPINNING

Our spinning factories operate in two different locations, Banjaran (West Java) and Boyolali (Central Java). Both factories are fully equipped to perform blowing, carding, combing, drawing, flaying, and winding processes.





## FABRIC



### GREIGE

As a manifestation of our integrated manufacturing, our weaving division manufactures greige fabrics from our own 100% Rayon Viscose Ring Spun Yarns with following specifications:

Product	Range of Product
Chally	Ry30xRy30 / 68x68, 1/1 67"
	Ry30xRy30 / 68x60, 1/1 67"
Belmando	Ry30xRy30 / 98x68, 2/1 63"
Micro Denier	Ry50xRy50 / 80x60, 1/1 63"
	Ry60xRy60 / 90x88, 1/1 65"
	Ry80xRy80 / 90x88, 1/1 65"

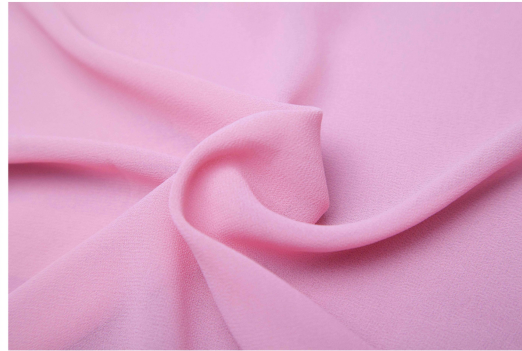
### WEAVING

Our weaving facility is divided into two categories, one that solely produces greige fabrics as the end product and one that produces greige fabrics for further processings. These facilities are equipped for warping, sizing, and drawing.

	Machine	Capacity
Weaving I	235 Air Jet Looms	1,500,000 yards /month (60 pick average)
Weaving II	110 Water Jet Looms	2,000,000 yards /month (60 pick average)
	116 Air Jet Looms	



## DYED FABRICS



**Ademoda** is the brand for our dyed products, polyester, rayon, and cotton. Based on the weight and types of the fabrics, our dyed products are categorized into four sub-brands:

**ELFINA** - Special yarns such as rayon and acetate are delicately mixed to obtain special touch and looks in this fabric. Known for its drapeability and comfort.

**AMADEUS** - this polyester fabric is woven by the most advanced machines from Belgium and later processed with sophisticated technology from Japan. The fabric has the feel and looks of wool.

**SILFIO** - this polyester fabric is woven and processed using the most advanced technology from Japan to obtain the touch and looks of silk.

**LIBRA** - this is the most basic polyester fabric that serves as the standard basic line as it never goes out of fashion.





We also manufacture a special dyed product, **Jet Black**, also known as **Formal Black**. This specific deep black colored fabric requires special chemicals and treatments to obtain excellent level of blackness and to maintain color fastness. Jet black is highly demanded in the Middle East as well as other countries such as Japan.





## PRINTED FABRICS



We manufacture printed polyester, rayon, and cotton fabrics with various kinds of material in terms of weight, which ranges from light, sheer to heavy weight.

## PROCESSING

Our processing facilities are fully equipped for all the necessary steps in printing and dyeing, which includes stenters, steamers, rotary washers, mercerizers, weight reducers, gassing machines, etc. In our printing division, hundreds of designs are generated each month using CADs to suit our customers' demands.

	Machine	Capacity
Dyeing	8 DHCR units	1,000,000 yards per month
	7 CRR units	
Printing	2 flat printing units	1,000,000 yards per month
	1 rotary printing units	







## GARMENT

We manufacture garments at two locations, Banjaran (West Java) and Boyolali (Central Java). The factory in Banjaran, **P.T. Saimoda Garmino**, manufactures formal attires. The Boyolali facility, **P.T. Tupai Adyamas Indonesia**, operates in sportswear manufacturing.



Our Bandung garment division, **PT. Saimoda Garmino**, manufactures and exports formal attire for men and women for various brands.

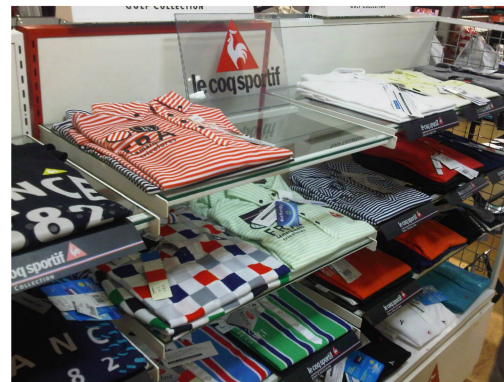
	Number of Units	Capacity
Sewing	455 units	80,000 pieces per month
Cloth Spreading	2 units	66,000 pieces per month
Needle Inspecting	1 units	70,000 pieces per month
Punching	5 units	60,000 pieces per month





PT. Tupai Adyamas Indonesia, our garment division at Boyolali (Central Java), manufactures and exports casual and sportswear

	Number of Units	Capacity
Sewing	1000 units	500,000 pieces per month
Embroidery	6 units	100,000 pieces per month
Cloth Spreading	7 units	600,000 pieces per month
Needle Inspecting	5 units	500,000 pieces per month
Hand Printing Desk	2 building	150,000 pieces per month







## OUR CUSTOMER

Our customers expect a lot from us – and they should.

ADETEX has a well-established reputation in offering high quality products and services to our customers worldwide. We greatly value our customers' trust and satisfaction - the very foundation of our longstanding partnerships.

The following are some of the companies across the globe which we are privileged to conduct business with:

- Toray
- Mitsubishi
- Toyobo
- Uniqlo
- Tahari
- Gymboree
- Liz Clairborne
- Puma
- Asics
- Jones AG
- M & S
- Express
- Limited Brands
- Le Coq Sportif



## ENVIRONMENT

Environmental awareness is of high importance in our company. We are dedicated to create and maintain a nature-friendly, safe, and conducive working environment, not only for our personnel, but also for the surrounding community.

Our water treatment and waste disposal systems are designed in compliance to the standard set by the government (Bapedal)





## CONTACT US

### CONTACT INFORMATION



We are here to answer any questions you may have about our product. Reach out to us and we'll respond as soon as we can.

Even if there is something you have always wanted to know about corporate and can't find it, let us know and we promise we'll do our best to find it for you and send you there.

### HEAD OFFICE ADDRESS

Jl. Dayang Sumbi No. 4-6  
Bandung 40132 - Indonesia  
Phone : +62 22 2503405  
Fax : +62 22 2501134  
Email : [headoffice@adetex.co.id](mailto:headoffice@adetex.co.id)

### SPINNING / WEAVING

Km 17 Jl. Raya Banjaran, Bandung  
Phone : +62 22 5944230, 5940142  
Fax : +62 22 5940156, 5944231

### PRINTING / ADETEX

590, Jl. Raya Banjaran, Bandung  
Phone : +62 22 5940143, 5940144  
Fax : +62 22 5940145

### DYEING / ADEMODA

Km 16.5 Jl. Raya Banjaran, Bandung  
Phone : +62 22 5941853  
Fax : +62 22 5941850

### SAIMODA GARMINDO

Km 16 Jl. Raya Banjaran, Bandung  
Phone : +62 22 5940304  
Fax : +62 22 5940158

### TUPAI ADYAMAS INDONESIA

Km 1 Jl. Merbabu, Boyolali  
Jawa Tengah  
Phone : +62 276 321325  
Fax : +62 276 321431

